

TK4 @46 bar

Oil Level Regulator

with integrated connectivity capabilities



CONNECTORS VERSION



TWO MOUNTING POSSIBILITIES WITH THE SAME PRODUCT (LEFT/RIGHT)

CABLE GLANDS VERSION



TWO MOUNTING POSSIBILITIES WITH THE SAME PRODUCT (LEFT/RIGHT)

Some advantages of this solution:

- Extremely compact dimensions
- Left/Right mounting possibility with the same TK4
- Reduction of the number of junctions in the circuit with less possibility of having leakages
- Usage of less components (simplified circuit and easier warehouse management)
- Simplified Installation (cost savings in terms of installation time)
- Revolutionary connectivity capabilities.

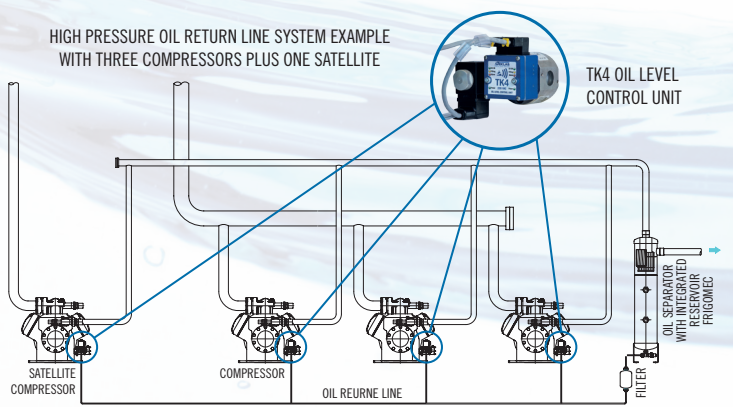
Main Features

- **High reliability** ensured by absence of mechanical moving parts.
- **Sight glass and electronic LEDs** can be checked **on the same side** where is **more comfortable** to do **inspections**.
- Well consolidated steel with fused glass technology with absence of seals ensures **no leakage** and **good chemical compatibility**.
- **Direct sight glass replacement (3/4/6 holes flange connection)**.
- 24 VAC / 230 VAC power supply options.
- **Easy maintenance of the coil** of the valve **and of the Electro-Optic sensor** that can be easily replaced **without emptying or depressurizing the plant**.
- 230 VAC /2A alarm relay output suitable for **direct connection in the security chain** of the system.
- **Adapters suitable for various types of compressors.**
- **Unit conform to directives 2014/30/UE and 2014/35/UE.**

Application Description

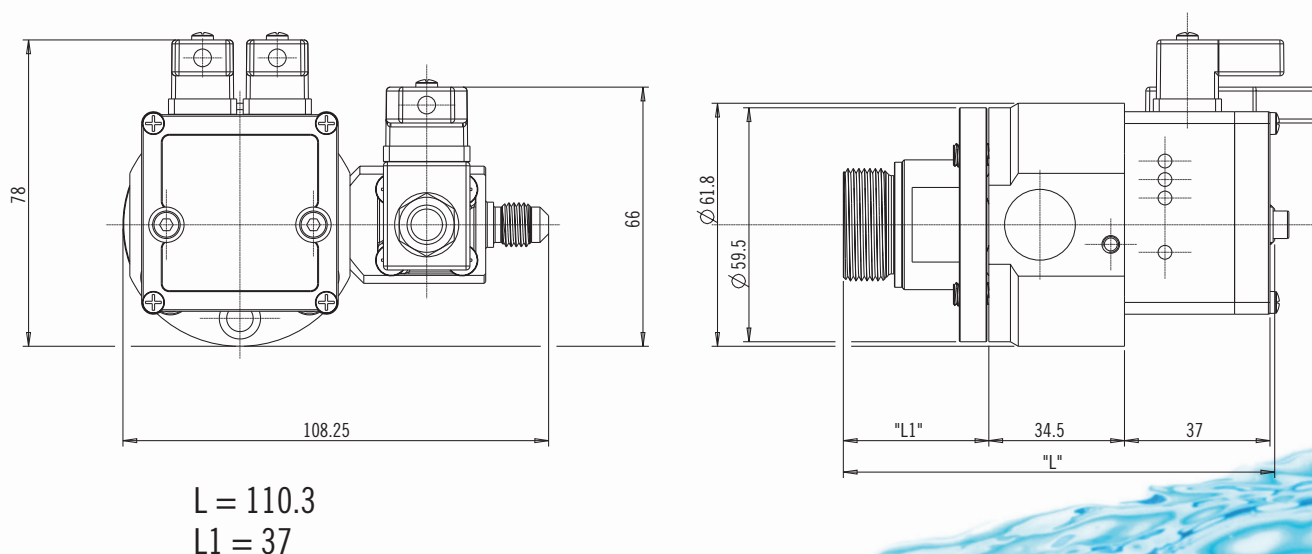
The TK4 is designed to control the oil level in the compressor crankcase in order to avoid the compressor to run without oil and so improve its lifetime. TK4 monitors the oil level with the embedded electro-optic sensor and comprises a solenoid valve for oil filling and a relay output contact to give an alarm.

HIGH PRESSURE OIL RETURN LINE SYSTEM EXAMPLE
WITH THREE COMPRESSORS PLUS ONE SATELLITE



SUPPLY VOLTAGE	24 VAC \pm 10% or 230 VAC \pm 10% depending on model
SUPPLY CURRENT	Each TK4 requires 20VA (depending on the solenoid valve)
ELECTRICAL CONNECTION	9.4mm Industry Standard Connectors / EN175301-803 Connector or spare wires
OUTPUT SIGNAL	Contact free relay output NO and NC
RELAY OUTPUTS	Up to 230VAC @2A
HOUSING MATERIAL	Nickel plated steel + fused glass PA glass fibre reinforced
ENCLOSURE PROTECTION CLASS	IP 65
MEDIA TEMPERATURE	-40°C÷+85°C
AMBIENT TEMPERATURE	-40°C÷+60°C
MAX WORKING PRESSURE	46 bar (higher pressure limits available on different TK4 models)
MOPD	26 bar (higher pressure limits available on different TK4 models)
OIL RETURN LINE	7/16 – 20 UNF male
CABLE TYPE	PVC cable CEI 20-22. Working temp.: -20 ÷ +70 °C (fixed laying)

Mechanical Dimensions (connectors version)



Note. - Quotes in mm -. L and L1 can vary depending on the adapter (see Adapters Addendum)

Ordering Codes

ELECTRICAL CONNECTION POWER SUPPLY	CABLE GLANDS 1 m	CONNECTORS 3 m	CONNECTORS 6 m
24 V	TK4-A50AB11-01	TK4-A50AC13-01	TK4-A50AC16-01
230 V	TK4-A50BB11-01	TK4-A50BC13-01	TK4-A50BC16-01

Program interfaces available. Suggested ordering codes not include oil strainer element. Adapters must be ordered separately.